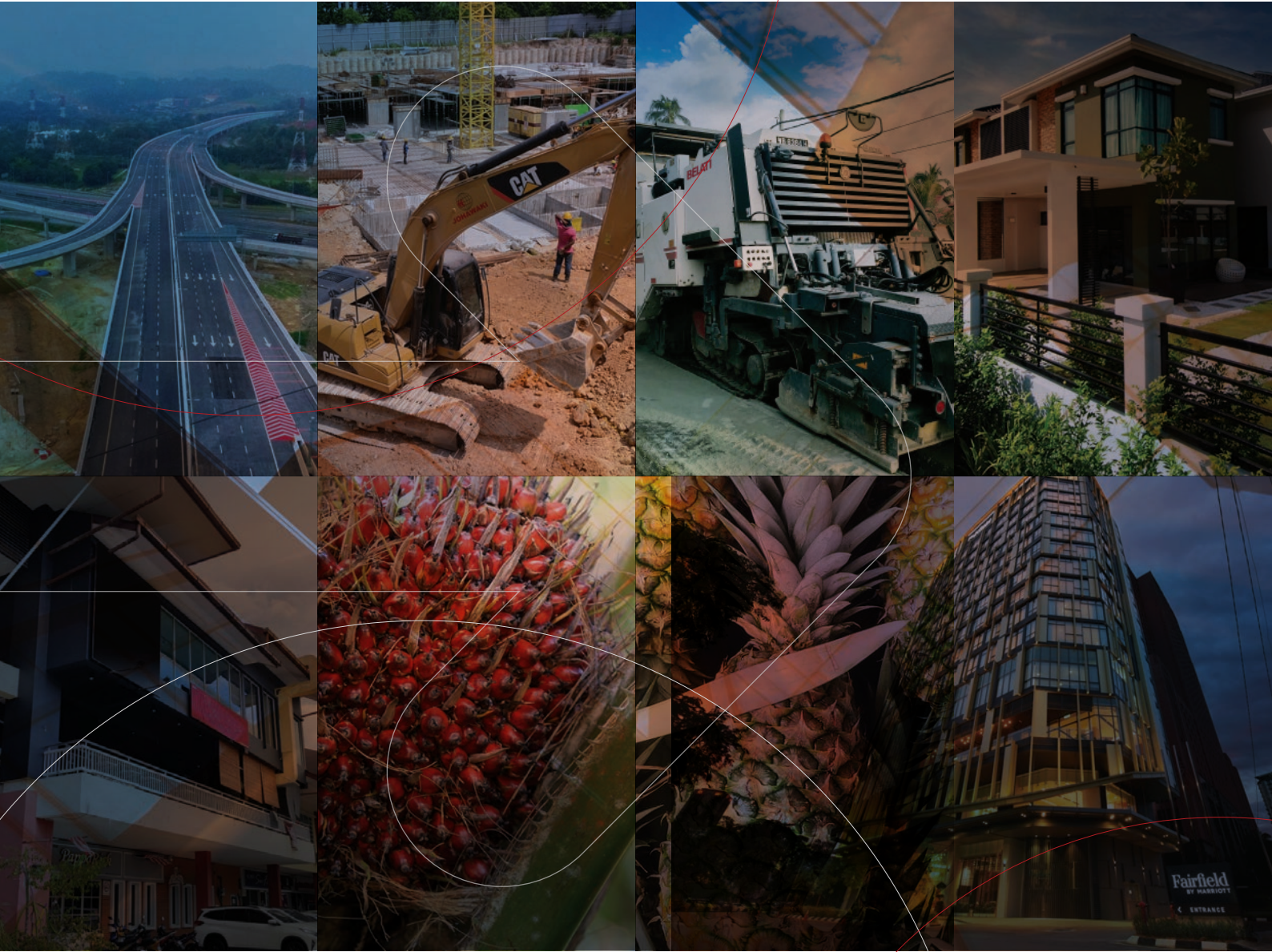


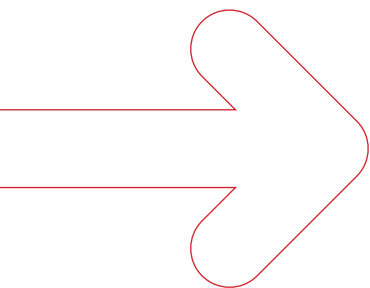
CORPORATE PROFILE



EXCELLENCE.
PROFESSIONALISM.
INTEGRITY.
CUSTOMER-CENTRIC.



It is not the beauty of a building you should look at; it's the construction of the foundation that will stand the test of time.



PAGE OF CONTENTS

Our Approach	4
History of JOHAWAKI	5
Milestones	6
Group Structure	7
Board of Directors	8
The Management	9
Awards & Achievements	10
Engineering & Construction	12
Trading & Machinery	14
Infrastructure & Road Maintenance	16
Property & Development	18
Plantation & Farm	22
Hospitality	26
Investment & Associates	28
Corporate Social Responsibilities	30
Current Projects	34
Completed Projects	40



OUR APPROACH

Vision

Aspires to be an integrated developer and engineering company of choice, offering diversified business portfolios with excellent products and services, whilst constantly adding growth and value to the industries that we serve.

Mission

To optimise the delivery of our professional services to our clients through technology-enabled business models and innovative customer management solutions in a way to sustainably enhance the community, people and environment where we operate.



Core Values

Embedded in our culture as the backbone and guiding principles of our business conduct, **E.P.I.C** reflects on our sense of duties and responsibilities in upholding our commitment towards contributing the well-being of our communities, customers, stakeholders and nations wherever we operate. Our commitment supported by the **five (5) strategic pillars of thrusts (leadership, financial sustainability, risk management, governance and operational excellence)** that underpin all our practises, is to make JOHAWAKI Group a company that changes along with the world.

Excellence

We strive to consistently achieve outstanding results, act with zero complacency and always focus on continuous improvement in bridging the gap between ideas and execution.

Professionalism

We are committed to transparency in performing our business to adhere to exceptional levels of professionalism in our actions while respecting each individual's uniqueness and creative characteristic.

Integrity

We are accountable for our conducts and uphold the highest level of integrity in all of our actions.

Customer-centric

We are determined to deliver high-quality products and excellent services, and ultimately contribute to improving our customer's experience and partner's success.



HISTORY OF JOHAWAKI

Johawaki roots extend back more than 40 years ago when two brothers decided to set up a construction business with the formation of Hawaki Enterprise on April 1, 1979.

Through hard work and entrepreneurial dynamism under the stewardship of Dato' Johari bin Mat and Dato' Haji Abdul Rahim bin Ahmad, their reputable Class 'A' contractor grew in tandem with the Malaysian growing economy. In 1984, an investment holding company was incorporated and named Johawaki Holdings Sdn Bhd.

Infused with resources that has strengthened the company tested stability, it has gone from strength to strength from years to years. The company continues expanding its wings in various industries and international portfolio investment. To date, Johawaki comprises separate entities in well diversified activities such as engineering & construction, infrastructure & road maintenance, property & development, plantation & farm, hospitality as well as investment & associates.

The success of Johawaki performance is largely based on an efficient organisation and a dynamic and entrepreneurial management, implemented through successive processes of mergers, takeovers and strategic plans committed to client's satisfaction as well as to maximising profitability for our shareholders.

With an ongoing commitment to growth that is all set to meet and transcend in any challenge. The goals set will continue to be achieved in order to scale new heights leveraging off its wide asset base guided by a vision for future profitability, financial advancement and corporate health.



MILESTONES

→ **1979**

Formation of Hawaki Enterprise on April 1, 1979 as a construction business.

→ **1982**

Hawaki Enterprise was converted into Johawaki Sdn Bhd on September 6, 1982.

→ **1983**

The company enter into real estate development by incorporated a new subsidiary, Johawaki Development Sdn Bhd on 1983.

→ **1984**

Johawaki Holdings Sdn Bhd was incorporated as an investment holding company.

→ **1987**

A property development company named Aliran Murni Sdn Bhd was incorporated with primary business focus on residential development projects.

→ **1990**

The company formed another subsidiary, Johawaki Properties Sdn Bhd to manage all properties & property investment belongs to Johawaki Group of Companies.

→ **1991**

The company diversify its business profile in palm oil plantation industry with the incorporation of Johawaki Plantation Sdn Bhd in 1991.

→ **1994**

The company formed another subsidiary company named as Johawaki Trading & Machineries Sdn Bhd, as a trading house to provide raw materials, equipment and machinery supplies to various subsidiaries.

On the same year, Belati Wangsa (M) Sdn Bhd was incorporated.

→ **1996**

The company invest in medical services with the fast growing healthcare group, DEMC Specialist Hospital in 1996 or currently known as Avisena Group.

→ **2000**

Belati Wangsa (M) Sdn Bhd. signed 15 years of maintenance agreement with the Government of Malaysia for the management and maintenance of Federal Roads in Northern Zone of the Peninsular Malaysia.

→ **2003**

The company venture into overseas investments on leather goods manufacturing, Nerzz Beslagic in Bosnia by incorporating Johawaki International Pte Ltd.

Johawaki Plantation Sdn Bhd was also formed on 7 February 2003 as a small scale palm oil nursery.

→ **2004**

Yayasan Johawaki was incorporated to identify, support and sponsor programmes aimed at developing and advancing the community.

→ **2007**

The company acquired Synergy Quest International Limited. In the same year Johawaki through Synergy Quest was awarded with Jakarta Outer Ring Road (JORR) project by Ministry of Public Works and Public Housing of the Republic of Indonesia.

→ **2014**

JH Hospitality Sdn Bhd was incorporated in 3 April to venture into the hospitality industry.

→ **2017**

Johawaki Construction Sdn Bhd certified by NIOSH for Occupational Health & Safety Management System Standard, ISO 45001:2018 and Environmental Management System Standard, ISO 14001:2015

→ **2018**

JH Hospitality Sdn Bhd inked Hotel Management Agreement with Marriot International to build first ever international 3-star hotel named as Fairfield.

→ **2020**

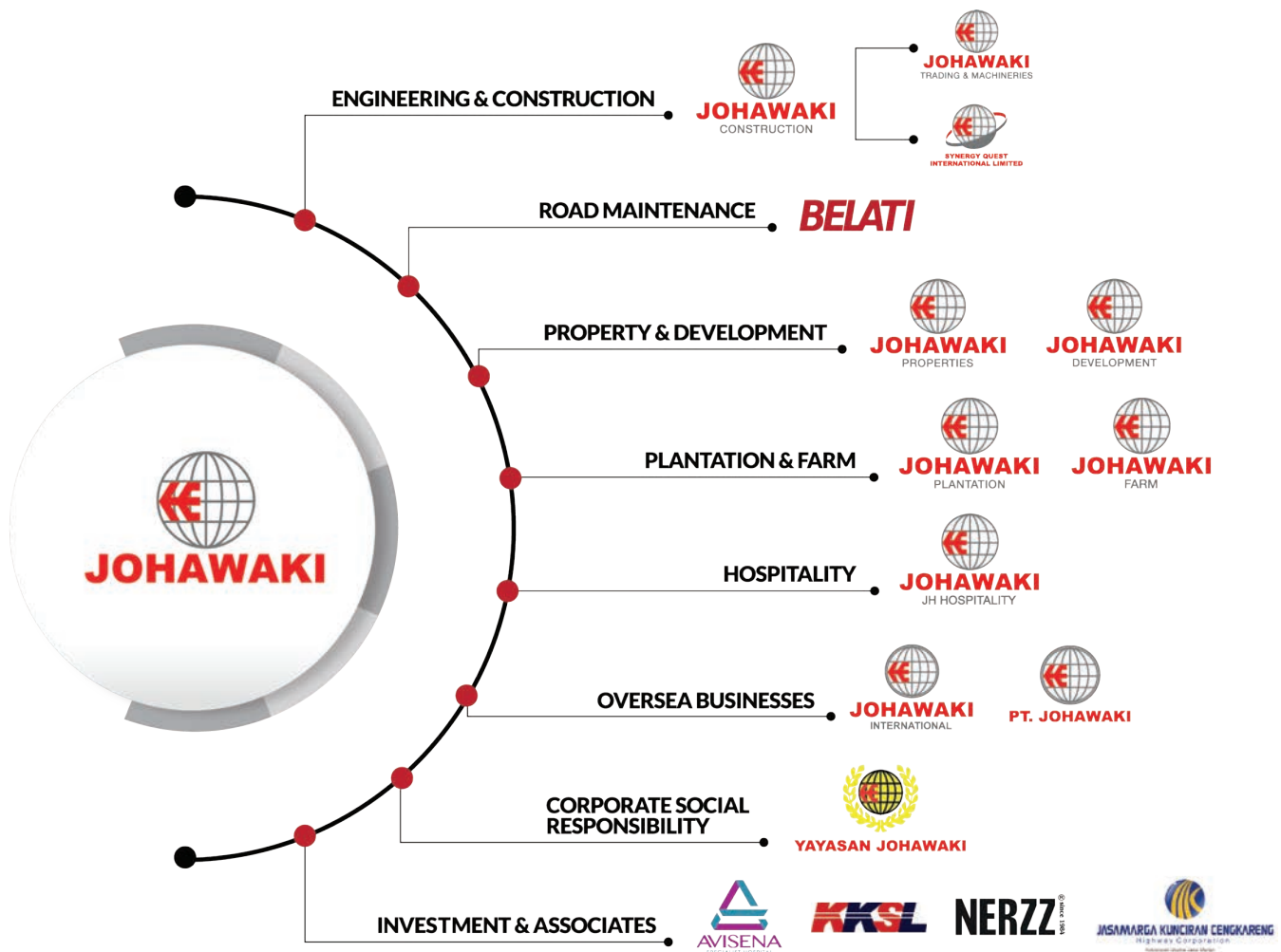
Johawaki Farm Sdn Bhd successfully obtained the MyGAP (Malaysian Good Agriculture Practices) certificate from the Ministry of Agriculture and Agro-Based Industry.

On the same year, Johawaki Construction Sdn Bhd certified by SIRIM QAS International Sdn Bhd for Quality Management System (IQNet) and Quality Management System ISO 9001:2015

GROUP STRUCTURE

Johawaki Holdings Sdn Bhd was incorporated on September 11, 1984 and grew as an investment holding company with interest in diversified activities.

The principal activities of its subsidiaries are divided into engineering and construction, infrastructure and road maintenance, property and development, plantation and farm, hospitality as well as investment & associates.



BOARD OF DIRECTORS



Datuk Ir. Hamzah bin Hasan
Chairman



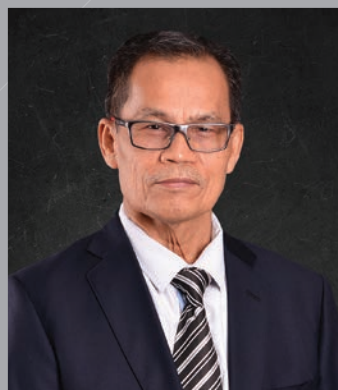
Dato' Johari bin Mat
Group Managing Director /
Group Chief Executive Officer



Dato' Abdul Rahim bin Ahmad
Group Executive Director



**Datuk Fazlur Rahman
bin K.M.M Ebrahim**
Non-Executive Director



Dato' Ir. Muhamad bin Husin
Non-Executive Director

THE MANAGEMENT



Dato' Johari bin Mat
Group Managing
Director / Group Chief
Executive Officer



**Dato' Abdul Rahim
bin Ahmad**
Group Executive
Director



**Mohamad Akmal
bin Johari**
Deputy Chief Executive
Officer (Finance)



Anizam bin Bakar
Chief Operation Officer



**Mohamed Salahudeen
bin Sahul Hamid**
Chief Financial Officer



Nur Azlina binti Johari
Chief Transformation
Officer

AWARDS AND ACHIEVEMENT



We are delighted and proud of our numerous accomplishments over the years. Throughout the years, we are grateful to have been recognised by these awards and accolades.



OUR BUSINESSES

A low-angle photograph of a construction worker in full PPE (yellow hard hat, yellow scarf, green safety vest, blue long-sleeved shirt, brown pants, and work gloves) walking on a construction site. In the background, another worker is visible, and there are rebar structures and a large white tarp-covered area. The sky is blue with some clouds. The image is framed with decorative white and red lines.

ENGINEERING & CONSTRUCTION

“Nothing in this world is more simple and more cheap than making cities that provide better for people.”

JOHAWAKI CONSTRUCTION SDN BHD

Company No: 198201009823 (89547-D)

Johawaki Construction Sdn Bhd (JCSB) is one of Malaysia's leading Bumiputera Class 'A' G7 contractors, recognised for its reputation for quality construction and outstanding services since 1982.

JCSB has been certified by SIRIM QAS International for the Quality Management System in compliance with MS ISO 9001:2015 and National Institute of Occupational Safety and Health (NIOSH) for Environmental Management System ISO 4001.

Having a well-defined scope and direction as well as the support of a team of dedicated and experienced professional both at the office and at every project site, the company has grown steadily in tandem with the Malaysian growing economy.



TRADING & MACHINERY

Construction is matter of optimism; Its a matter of facing the future with confidence.

JOHAWAKI TRADING & MACHINERIES SDN BHD

Company No: 199401025203 (310882-W)

Johawaki Trading & Machineries Sdn Bhd (JTMSB) was incorporated in 1994 to supply raw materials, equipment and machinery to different subsidiaries and occasionally receive requests from subcontractors.

JTMSB has successfully positioned itself to take full advantage of construction opportunities and sets the benchmarks in introducing innovative technology, optimum quality and service. The company has had an excellent reputation for decades and has worked with a large number of manufacturers and suppliers around the world.



ROAD MAINTENANCE

Roads remain the essential network of the non-virtual world. They are the infrastructure upon which almost all other infrastructure depends. They are the paths of human endeavor.



BELATI WANGSA (M) SDN BHD

Company No: 199401039388 (325074-W)

BELATI Wangsa (M) Sdn Bhd (BWSB) is a reputable road maintenance company engaged in road works in the Northern Zone of the Peninsular Malaysia.

BWSB is currently undertaking a concession to maintain Malaysia's Federal roads in the state of Perak. BWSB specialises in road maintenance and the scope of work includes routine, periodic pavement, non-periodic pavement and emergency works.

With extensive fleet of road construction equipment, BWSB has also successfully implemented innovation in its asset management and data collection. The use of Hawkeye technology in Multi Laser Profiler fleet is the most complete intelligent data collection system used in Belati Asset Information & Management System (BeAIMS). Modular, scalable and customisable, it is ideal for mapping surveys as well as the most challenging road survey requirements used in data analysis to determine the best road treatment.





DEVELOPMENT & PROPERTY

You never change things by fighting the existing reality. To change something, build a new model that makes the existing model obsolete.

JOHAWAKI DEVELOPMENT SDN BHD

Company No: 199001011714 (203284-U)

The arrival of Johawaki Development Sdn Bhd (JDSB) into property industry was marked by its pioneering development projects comprising of residential and commercial units in Taman Bakti Sungai Besar Selangor, Subang Murni (Seksyen U5 Shah Alam) and Saujana Permai (Seksyen U17 Shah Alam).

Today, JDSB has continued its conquest to the top by developing Avanti Residences, a low densely populated area in Seksyen U17 featuring semi-detached homes with built ups between 2,750 sq ft to 3,090 sq ft.

JDSB has been certified by National Institute of Occupational Safety and Health (NIOSH) for Property Development of Residential, Commercial and Industrial ISO 9001:2015.

On account of the company's success, JDSB was awarded with the prestigious Qlassic Achievement Awards of Excellence in 2018. To date, JDSB has embarked on several new developments, while gradually increasing its land bank for future development projects, making its presence known in the property development industry.





DEVELOPMENT & PROPERTY

**Property is an
imperishable asset,
ever increasing in
value.**

JOHAWAKI PROPERTIES SDN BHD

Company No: 199001011714 (203284-U)

Johawaki Properties Sdn Bhd (JPSB) was established on 25th August 1990 as a new avenue for growth within the group.

JPSB involves in property investments and managing all properties belonging to Johawaki Group of Companies. JPSB core business includes acquisition, disposal, rent and leasing of properties whether its residential, commercial or industrial and also coordinates on building and land affairs.

With proven competencies in the property industry JPSB aim to provide professional and effective strategies to improve property value and maximise potential while creating more value to the tenants.



A large pile of harvested palm oil fruit clusters (bunches) in a plantation setting. The fruit is dark red and glossy, with some green leaves still attached. The background shows a dense forest of palm trees.

PLANTATION & FARM

“The true meaning of life is to plant trees, under whose shade you do not expect to sit.”

JOHAWAKI PLANTATION SDN BHD

Company No: 199101005842 (216152-D)

Johawaki Plantation Sdn Bhd (JPLSB) incorporated on 26 April 1991. The company started its venture into planting oil palm in 1996 with the main office located in Setiawan, Perak.

The company has a total land bank area of 3530.29 acres of which 3380.16 acres planted with oil palm trees located at Lekir, Sungai Durian, Lambor in Perak and Kalumpang, Selangor respectively. The crops at the estates are well managed by a team of experienced workers who continuously strive to improve yield productivity and to ensure the production of high quality products through a comprehensive programme.

JPLSB looks forward to emerge as a key contributor to the success of the Malaysian Oil Palm Industry (MPOB) and more position itself as one of the successful and reputable plantation companies in Malaysia through expansion either in Peninsular Malaysia or in Borneo.





PLANTATION & FARM

“The ultimate goal of farming is not the growing of crops, but the cultivation and perfection of human beings.”

JOHAWAKI FARM SDN BHD

Company No: 200301003280 (605700-D)

Johawaki Farm Sdn Bhd (JFSB), a wholly owned subsidiary of Johawaki Plantation, was incorporated on 7 February 2003. Initially, the company started out as a small scale palm oil nursery and later became involved in cow and chicken farming.

Realizing the potential and the growing market of pineapples, JFSB then ventured into MD2 pineapple plantation with 10 acres of growing space for phase one and currently growing into the next phase.

In November 2020, JFSB successfully obtained the MyGAP (Malaysian Good Agriculture Practices) certificate from the Ministry of Agriculture and Agro-Based Industry, which proved that JFSB had acquired all the requirements in good agricultural practise that are environmentally friendly, provide good safety and well-being for workers in order to produce high quality farm production that is safe and suitable for consumption.

In line with this accreditation, growth and stability of business potential, JFSB is set to penetrate the local and international premium market in the near future.





HOSPITALITY

“People will forget what you said, forget what you did, but people will never forget how you made them feel.”

JH HOSPITALITY SDN BHD

Company No: 201401011492 (1087568-M)

JH Hospitality Sdn Bhd (JHHSB) was incorporated on 3 April 2014 and mainly involve in the hospitality industry.

On the 18th January 2018, Johawaki Hospitality Sdn Bhd (JHHSB), has partnered with Marriott International under the Hotel Management Agreement to build our first ever 3-star international hotel brand, Fairfield.

Situated at Jalan Datuk Hj. Eusoff Off Jalan Pahang, less than 10km from the nation's cultural, financial, and economic city centre, Fairfield by Marriott Hotel Kuala Lumpur is designed to deliver an inviting and effortless experience for guests. With close proximity to the monorail and LRT stations, beloved places of interest such as PETRONAS Twin Towers, Bangunan Sultan Abdul Samad, National Museum, and Bukit Bintang are easily within reach from the hotel.



Fairfield
BY MARRIOTT

ENTRANCE

The background of the page features a photograph of three business professionals in a meeting. A man stands on the right, leaning over a desk where two women are seated. They are all looking at a laptop screen. The scene is backlit by a large window, creating a warm, golden glow and silhouetting the individuals. Abstract white and red lines are overlaid on the image, including a large white circle and a red squiggle.

INVESTMENT & ASSOCIATES

“

**An investment in
knowledge pays
the best interest.**

”



Johawaki has spread its wings into strategic investments globally to grow and expand the company's scope of business.

The company holds shares in the palm oil milling through Kilang Kelapa Sawit Lekir Sdn Bhd (KKSL) and healthcare with Avisena Group.

Furthermore, through Johawaki International Pte Ltd (JIPL), Johawaki expanded its international investment profile by investing in a leather and fur fashion company located in Visoko, Bosnia as well as developing a high-end residential unit, Mansion 8, in Lebak Bulus, Jakarta, Indonesia through PT Johawaki.



CORPORATE SOCIAL RESPONSIBILITIES

“

Successful people have a social responsibility to make the world a better place and not just take from it.

”



We integrate ourselves in our local communities by supporting local events and contributing our resources to enhance the standard of living of those who are marginalised or underprivileged.

Yayasan Johawaki ("the Foundation") is incorporated in 28 January 2004 as non-profit organisation limited by guarantee to serves as philanthropic arm of Johawaki Group of Companies.

Over the years the foundation focuses on initiatives and commitment to enrich lives of the deserving individual as well as underprivileged family for a sustainable future across the nation.



Success is not final; failure is not fatal: It is the courage to continue that counts.



CURRENT PROJECTS

RUMAH SELANGORKU AURORA APARTMENT





MRT PUTRAJAYA LINE FEEDER BUS DEPOT





CURRENT PROJECTS

UDA 38 BANGSAR





KOMPLEKS DEWAN BEDAH, ICU & WAD HOSPITAL KUALA LUMPUR



CURRENT PROJECTS



HOTEL FAIRFIELD KUALA LUMPUR





DAMANSARA-SHAH ALAM ELEVATED EXPRESSWAY (PACKAGE CA3)



COMPLETED PROJECTS



AVISENA WOMEN'S & CHILDREN'S SPECIALIST HOSPITAL



MULTI LEVEL CAR PARK, HKL



PULAPOL KUALA LUMPUR



R&D UNIVERSITI TEKNOLOGI PETRONAS



UiTM PUNCAK ALAM



COMPLETED PROJECTS



KOLEJ TUNKU KHURSHIAH



MASJID INDIA MUSLIM, KLANG



RUMAH PANGSA MERBAU SEMPAK



GENOM MALAYSIA



KOMPLEKS AGROBIO UPM



KOMPLEKS AGROBIO PAKEJ C UPM

COMPLETED PROJECTS



MULTIMEDIA PUBLICATION HOUSE, UTUSAN MELAYU (MALAYSIA) BERHAD



CAR PARK KLCC



UITM SEREMBAN



AEON PERDA, PENANG



KOMPLEKS MAHKAMAH JALAN DUTA

COMPLETED PROJECTS



SMK PUTRAJAYA PRESINT 9



SHOWROOM ARA DAMANSARA



KEMENTERIAN DALAM NEGERI MELAKA



PERUMAHAN SUBANG MURNI, SHAH ALAM



JEJAMBAT SEBERANG PERAI



PUBLIC SERVICE GOLF CLUB, BUKIT KIARA



SELANGOR ISLAMIC COLLEGE (KISDAR)



HOSPITAL KEPALA BATAS



IKBN ALOR GAJAH



MASJID SIMPANG TIGA GOMBAK



PUSAT PAMERAN PUTRAJAYA

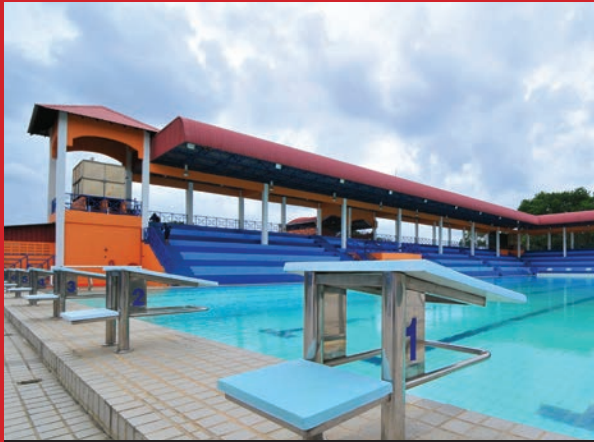
COMPLETED PROJECTS



MASJID WILAYAH PERSEKUTUAN



DEWAN UNDANGAN NEGERI MELAKA



**SEKOLAH SUKAN NEGERI BANDAR PENAWAR,
JOHOR**



TNB TEMERLOH



HOSPITAL BALING



PEJABAT DAERAH HULU LANGAT, BANGI



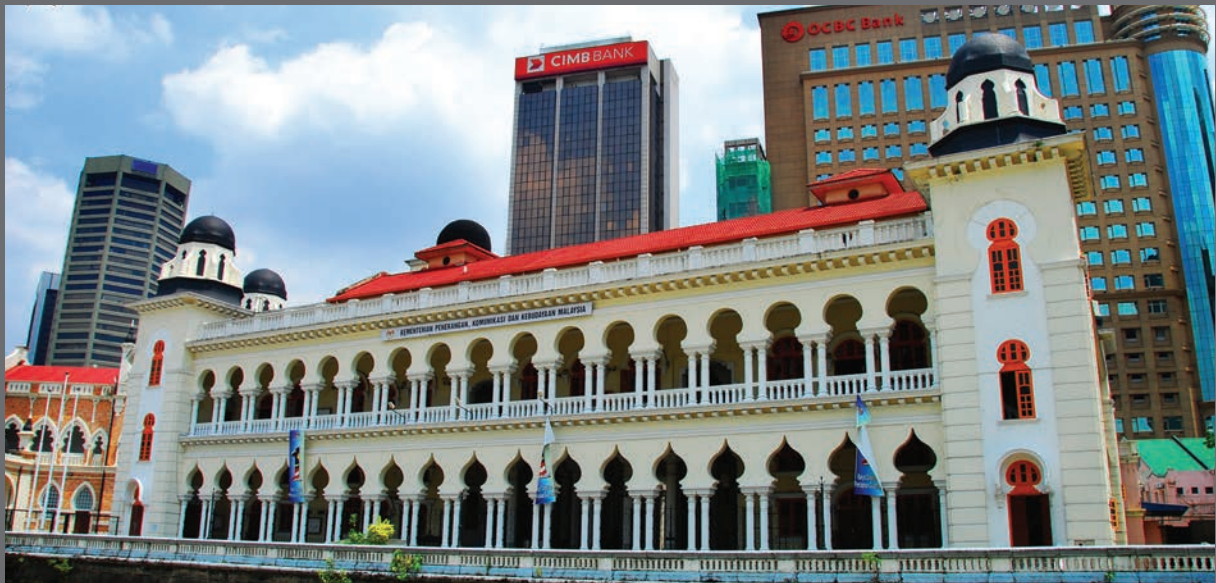
JALAN SUBANG



JALAN MATRADE



ISTANA NEGARA



CRIMINAL COURT, JALAN RAJA, KUALA LUMPUR



MALAWATI INDOOR STADIUM, SHAH ALAM



MASJID JAMEK, KUALA LUMPUR

Please visit our Corporate Website for more information on our other businesses and related subsidiaries.

@ 2022 JOHAWAKI HOLDINGS SDN BHD 198401014134 (126690-K)

All rights reserved. JOHAWAKI makes no representation or warranty, whether expressed or implied, as to the accuracy or completeness of the facts presented. JOHAWAKI disclaims responsibility from any liability arising out of reliance on the contents of this publication.



JOHAWAKI HOLDINGS SDN BHD

Lot 3669, Jalan Batu Tiga-Sungai Buloh
Section U6, 40150 Shah Alam
Selangor Darul Ehsan, Malaysia

T +603-7847 1111 **F** +603-7847 5028

www.johawaki.com.my



Johawaki Group of Companies



JOHAWAKI GROUP OF COMPANIES



JohawakiGroup



johawakigroup.official